

Installation & Wiring Instructions

CB5S Compact Emergency Bulkhead



PLEASE READ THESE INSTRUCTIONS BEFORE COMMENCING INSTALLATION & LEAVE WITH END USER

Description:

The CB5S is a standalone maintained/non-maintained emergency fitting designed as a discrete and simple IP65 emergency light source. The battery is a 3.2V 3.8Ah lithium iron phosphate (LiFePO₄). The LEDs are driven at 700mA and provide 345 lumen for three hours.

The CB5S/DA operates the DALI-2 protocol.

The unit will recharge the batteries after the test of clause 22.3 of BS EN 61347-2-7:2022.

The product features battery temperature protection in accordance with IEC 61347-2-7: 2012+A12:2022.

Specification:

Input Voltage	230-240 Volts AC 50/60 Hz
Basic Power Charging *	5.7W 31mA $\lambda = 0.75$
Basic Power Charged *	0.2W 8mA $\lambda = 0.1$
DALI Power Charging *	5W 28mA $\lambda = 0.74$
DALI Power Charged *	0.3W 8mA $\lambda = 0.15$
Duration	3 hours
Ambient Temp.	0°C to + 25°C
Min. Battery Temperature	0°C
Max. Battery Temperature	55°C
Battery Fuse	Internal
Discharge Current	900mA Nominal
Discharge Voltage Cut-off	2.5V
Ingress Protection	IP65
Battery Pack	3.2V 3.8Ah LiFePO ₄
Charge Current	225mA Nominal
Recharge Period	24 Hours
Overall Weight (Basic)	0.54Kg
Overall Weight (DALI)	0.56Kg
LED Colour Temperature	6800K

* LiFePO₄ control gear will initially charge the battery and then spend 90% of its operational life in a 'Charged' or standby state.



Lumen Level and Operation

CB5S/M	345lm, Basic Maintained/Non-maintained
CB5S/M/DA	345lm, DALI-2 Self-test Maintained/Non-maintained
CB5S/LMEM	345lm, Wireless Self-Test Maintained/Non-maintained

Important

It is recommended that the unit is installed by a competent person ensuring the installation complies with the necessary standards. Liteplan accept no responsibility for injury, damage or loss, which may arise as a result of incorrect installation, operation or maintenance.

The product requires an un-switched supply for charging the battery..

ISOLATE MAINS SUPPLY AND DISCONNECT THE BATTERY BEFORE INSTALLATION OR MAINTENANCE.

Installation:

1. Open the cover of the CB5S using a small terminal driver.
2. Open the hinged geartray of the CB5S with a small terminal driver.
3. Connect the mains supplies to the terminal block, ensuring that the cable restraint is used.
4. If the fitting is to be used in maintained mode, please connect the un-switched (L1), the switched (L), and the neutral (N) cables. If being used in non-maintained mode, please ignore the switched terminal.
5. If DALI feedback is required, please connect the DALI bus to the two DALI terminals. (CB5S/DA only)
6. Close the geartray and click it into place.
7. Replace the cover, clicking it into place in all four corners to ensure IP rating.
8. See Testing and Commissioning section.

Tel +44 (0)1708 372223 | www.liteplan.com | customerservice@liteplan.com | RM3 0AP. UK

Liteplan reserve the right to change colour, price or specification without prior notice

ISS 171125



LiFePO₄

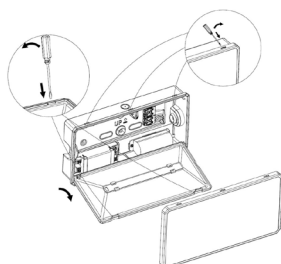


Installation & Wiring Instructions

CB55 Compact Emergency Bulkhead

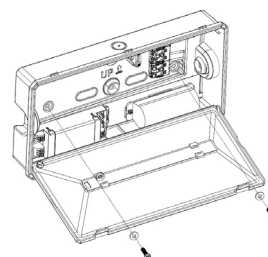
PLEASE READ THESE INSTRUCTIONS BEFORE COMMENCING INSTALLATION & LEAVE WITH END USER

Figure one



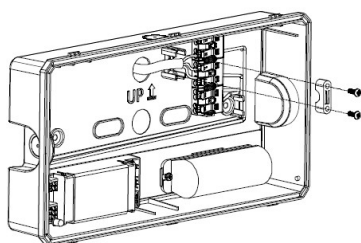
1- Using a terminal driver, open the cover, unclipping at all six points and remove it. With the same driver, unclip the geartray and swing it open at the hinge.

Figure two



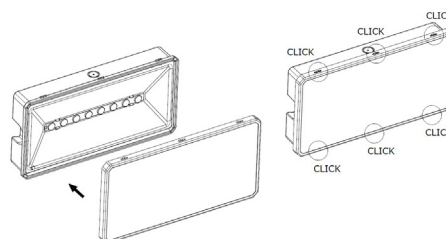
2 - Using one of the various fixing points, install the luminaire in its desired position, with the supply cables coming into the luminaire.

Figure three



3 - Connect the supplies and, where required DALI bus. Once power is assured, connect the battery connector. Ensure that the cable clamp is tightened.

Figure four



4 - Return and click the geartray to its operational position. Replace the cover, making sure there is a click at all six points to maintain IP rating.

LED Fault indication			
		Self-test / DALI	Basic Emergency
Green Solid	Battery Charging, no fault	On	On
Green Blink	Pre-Commissioning	2.0s on, 0.2s off	
Green Flash	Function Test running	0.2x on, 2.0s off	
Green Flash	Duration test running	0.2s on, 2.0s off	
Green Flash	Duration test passed	4.0s on, 1.0s off (7 days)	
Red Blink	Battery Temperature fault	0.2s on, 3.8s off	
Red Flash x1	Battery fault	0.5s on, 3.5s off	
Red Flash x2	Lamp fault	2x 0.5s on, 2.5s off	
No Indication	Fault	-	Off
Red/Green Flash	Duration test timeout (after 7 days)	2.0s green, 0.2s red	

Testing/Commissioning:

- Ensure all connections are made, including the battery.
- Switch on the un-switched supply (L1) - Check the charge LED illuminates.
- Switch on the switched supply (L) - Check the central load LED illuminates (maintained units only)
- Switch off the un-switched supply - Check the charge LED extinguishes and the central load LED illuminates.
- Switch on the un-switched supply.