

# Installation & Wiring Instructions

## CE1S/M and CE1S/DA



**PLEASE READ** THESE INSTRUCTIONS BEFORE COMMENCING INSTALLATION & LEAVE WITH END USER

### Description:

The CE1S is a compact, architectural blade exit sign. The CE1S can be either wall mounted or ceiling mounted as shown overleaf.

The battery is a 3.2V 3.8Ah lithium iron phosphate (LiFePO<sub>4</sub>). The LEDs are driven at 700mA and provide suitable legend illumination for 3 hours.

The control gear that powers the CE1S/DA operates the DALI-2 protocol.

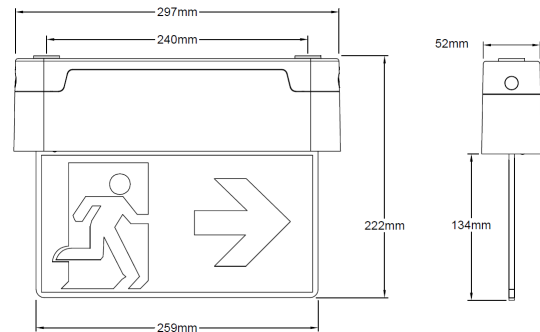
The unit will recharge the batteries after the test of clause 22.3 of BS EN 61347-2-7:2012.

The product features battery temperature protection in accordance with IEC 61347-2-7: 2012+A12:2022.

### Specification:

Input Voltage	230-240 Volts AC 50/60 Hz
Power Basic Charging M *	5.7W 34mA $\lambda = 0.71$
Power Basic Charged NM *	0.2W 11mA $\lambda = 0.07$
Power DALI Charging M *	5.4W 30mA $\lambda = 0.75$
Power DALI Charged NM *	0.3W 8mA $\lambda = 0.15$
Duration	3 hours
Minimum Battery Tc	0°C
Maximum Battery Tc	55°C
Ta	5°C to 25°C
Battery Fuse	Internal
Discharge Current	900mA nominal
Discharge Voltage Cut-off	2.5V
Ingress Protection	IP40
Battery Pack	3.2V 3.8Ah LiFePO <sub>4</sub>
Charge Current	225mA nominal
Recharge Period	24 Hours
Overall Weight	0.82Kg

\* LiFePO<sub>4</sub> control gear will initially charge the battery and then spend 90% of its operational life in a 'Charged' or standby state.



### Part Codes

CE1S/M/\*\* Maintained/Non-maintained basic emergency  
CE1S/DA/\*\* Maintained/Non-maintained DALI-2 self-test  
CE1S/LMEM/\*\* Maintained/Non-maintained Wireless self-test

\*\* Denotes arrow direction required. AU for arrow up, AD for arrow down and ALAR for arrow left/arrow right

### Important

It is recommended that the unit is installed by a competent person ensuring the installation complies with the necessary standards. Liteplan accept no responsibility for injury, damage or loss, which may arise as a result of incorrect installation, operation or maintenance.

The product requires an un-switched supply for charging the battery..

ISOLATE MAINS SUPPLY AND DISCONNECT THE BATTERY BEFORE INSTALLATION OR MAINTENANCE.

#### Installation:

1. Cut power to the area via the breaker.
2. Take the four parts of the product apart.
3. Install the first fix section to either the wall or the ceiling as required. Bring the mains cable through.
3. Install the mains cables and, where required, the DALI bus cables as shown overleaf.
4. Once permanent power is assured, connect the battery connectors .
5. Fit the light source to the body of the CE1S tightening the two screws as shown overleaf.
6. Click the body to the first fix part.
7. Fit the legend panel to the body, ensuring that the charge LED meets its viewing hole. This should follow the guidance of BS (EN)-5266.
8. Reinstate power to the fitting.
9. See Testing and Commissioning section.

Tel +44 (0)1708 372223 | [www.liteplan.com](http://www.liteplan.com) | [customerservice@liteplan.com](mailto:customerservice@liteplan.com) | RM3 0AP. UK

Liteplan reserve the right to change colour, price or specification without prior notice

ISS 150725



Liteplan

LiFePO<sub>4</sub>

DALI-2



UKCA

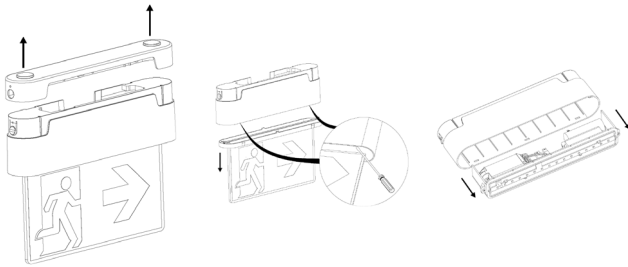
# Installation & Wiring Instructions

## CE1S/M and CE1S/DA



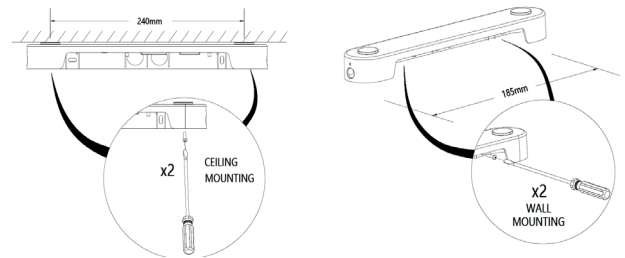
**PLEASE READ** THESE INSTRUCTIONS BEFORE COMMENCING INSTALLATION & LEAVE WITH END USER

Figure one



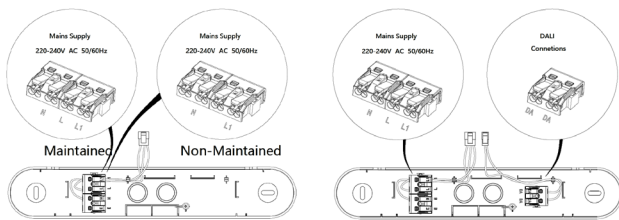
1 - Take the fitting apart as shown in the above diagrams

Figure two



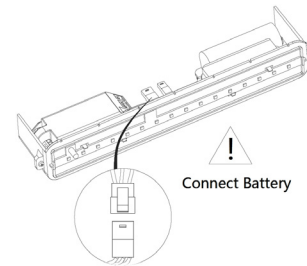
2 - Install the first fix section of the CE1S to either the wall, or the ceiling, as shown.

Figure three



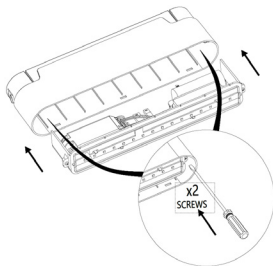
3 - Fit mains supply cables to the terminals as shown. Either maintained or non-maintained operation. Connect DALI cables if required. (DALI versions only).

Figure four



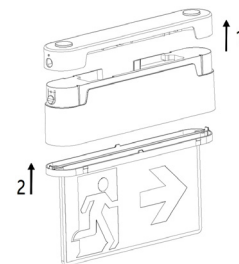
4 - Once mains supply is present, connect the 3-way battery cable connectors together.

Figure five



5 - Fit the gear tray back into the body, tightening the screws as shown.

Figure six



6 - Click the body back into the first fix section, ensuring the the connector(s) from the mains/DALI terminal blocks have been connected to the gear tray. Click the legend to the body ensuring it is the correct way round and observing the position of the charge LED.

### Testing/Commissioning:

- Ensure all connections are made, including the batterythe load is connected.
- Switch on the Un-switched Supply (L1) - Check the charge LED illuminates.
- Switch on the switched supply (L) - Check the central load illuminaites (maintained units only)
- Switch off the Un-switched Supply (L1) - Check the charge LED extinguishes and the central load LED illuminates.
- Switch on the Un-switched Supply (L1).

Tel +44 (0)1708 372223 | [www.liteplan.com](http://www.liteplan.com) | [customerservice@liteplan.com](mailto:customerservice@liteplan.com) | RM3 OAP. UK

Liteplan reserve the right to change colour, price or specification without prior notice

