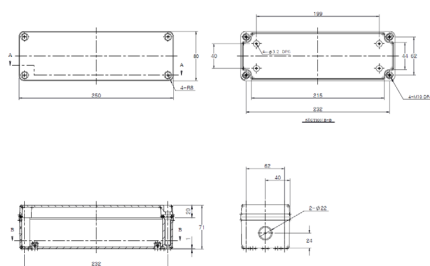


Technical Specification

T2N/2/WP100/R - High Output

High Voltage Remote DALI-2 Self-Test Range



- DALI-2 Self-Test Conversion Kit
- Deep discharge protection
- Complete Kit Housed in One Enclosure
- Extra Long Life LiFePO4 Batteries
- Converts LED Loads from 50-300 Volts
- Ingress Protection Rating of IP54
- Moulded in High Grade Polycarbonate
- Average Emergency Power of 4.3W
- Operates with LiteMesh Wireless System
- Features Battery Temperature Protection

There is one version available -

Order Codes

T2N/2/WP100/R For LED loads, operating in voltage range of 50 - 300 Volts

Unit supplied in single part remote enclosure with labelled termination for simple connection.

Technical Details:

Mains Supply	230-240V AC 50/60 Hz	Max Module Ta and Tc	Ta = 50 °C & Tc = 70 °C
Power Rating (Charging)	3.9W 21mA $\lambda = 0.77$	Battery Temp. Parameters	0 °C to 55 °C
Power Rating (Standby)	1.4W 12mA $\lambda = 0.47$	Charge Indicator	Side of Enclosure
Duration	3-Hours	Battery Discharge Current	950mA Nominal
Recharge Period	24-Hours	Discharge Voltage Limit (DDP)	5.0 Volts
Battery Size & Type	6.4V 3.8Ah LiFePO4 Cell	Ingress Protection	IP54
Charge Current	225mA Nominal	Mains Input Terminal - Screw	1.0mm ² - 2.5 mm ²
Enclosure Material	Polycarbonate	Dimensions (LxWxH)	222mm x 146mm x 55mm
Kit Weight	1.48Kg	Mains Input Gland Size	16mm

* After its initial charge, the T2N/2/WP100/R will spend 90% of its operational life in the standby mode

Tel +44 (0)1708 372223 | www.liteplan.com | customerservice@liteplan.com | RM3 OAP. UK

Liteplan reserve the right to change colour, price or specification without prior notice

ISS 200325

