

Installation & Wiring Instructions

OLP/1/DA -

DALI Self-Test Bulkhead

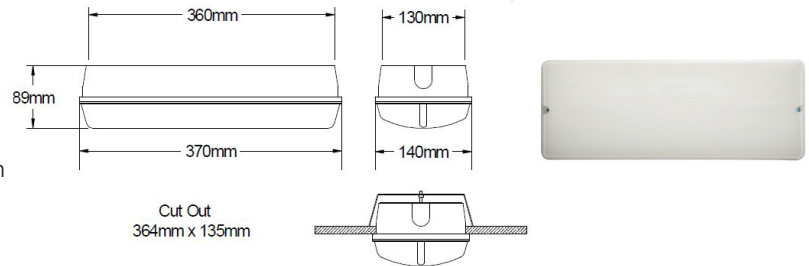


PLEASE READ THESE INSTRUCTIONS BEFORE COMMENCING INSTALLATION & LEAVE WITH END USER

Description:

The OLP/1/DA DALI self-test bulkhead is a robust IP65 luminaire which offers 1163 lumen in mains operation and 358 lumen in emergency operation. The high emergency output provided by this product in emergency makes it perfect for high ceilings.

The OLP/1/DA is manufactured with an opal diffuser which casts the light well over a wide arc and with a high light output ratio (LOR). Ldt files in both mains and emergency operation are available, please contact the Liteplan sales office who will be happy to send them to you. If not connected to a DALI system, the OLP/1/DA will revert to standalone self-test operation. The product features battery temperature protection in accordance with IEC 61347-2-7: 2012+A12:2022.



Specification:

Input Voltage	230-240 Volts AC 50/60 Hz
Power Rating (Non-Maintained)*	1.4W 12mA - $\lambda = 0.48$
Power Rating (Maintained)	12.4W 63mA $\lambda = 0.82$
Ta Parameters	0°C to + 35°C
Mains Input Terminal	0.5mm - 2.5mm
Battery Fuse	Internal to D2N/1
Battery Discharge Current	900mA
Discharge Voltage Limit	2.4V
Ingress Protection	IP65
Battery Pack	3.2V 3.8Ah LiFePO4
Charge Current	225mA Nominal
Recharge Period	24-Hours
Width and Length	370mm 140mm
Depth	89mm
Side Cable Entry	20mm Knock Outs L&R
Rear Cable Entry	20mm Knock Out Centre
Overall Weight (M3)	1.8Kg

* After its initial charge, the OLP will spend 90% of its operational life in standby mode.

Product codes

OLP/1/DA/NM Non-maintained DALI Self-Test 3 hour
OLP/1/DA/M Maintained DALI Self-Test 3 hour (Basic mains)
OLP/1/DA/MD Maintained DALI Self-Test 3 hour (DALI Mains)

Important

It is recommended that this product is installed by a competent person in accordance with the current building and wiring regulations.. Liteplan accept no responsibility for injury, damage or loss, which may arise as a result of incorrect installation, operation or maintenance.

The product requires an un-switched supply for charging the battery and a switched supply for maintained operation.

ISOLATE MAINS SUPPLIES AND DISCONNECT THE BATTERY BEFORE INSTALLATION OR MAINTENANCE.

Installation:

1. Remove the two front screws and lift off diffuser.
2. Remove the two screws on the hinged geartray and lift to reveal the components underneath.
3. Open your desired cable entry and feed mains cable through. Use the required IP rated gland to ensure that IP rating is maintained.
4. Connect the cables to the terminal blocks as shown in the diagram overleaf.
5. For Non-Maintained operation, do not connect to the Switched Live terminal.
6. Connect the battery.
7. Screw the geartray back into position ensuring no cables are trapped.
7. Refit the cover.
8. Fit the screws back into the diffuser making a water tight seal.

Tel +44 (0)1708 372223 | www.liteplan.com | customerservice@liteplan.com | RM3 OAP. UK

Liteplan reserve the right to change colour, price or specification without prior notice

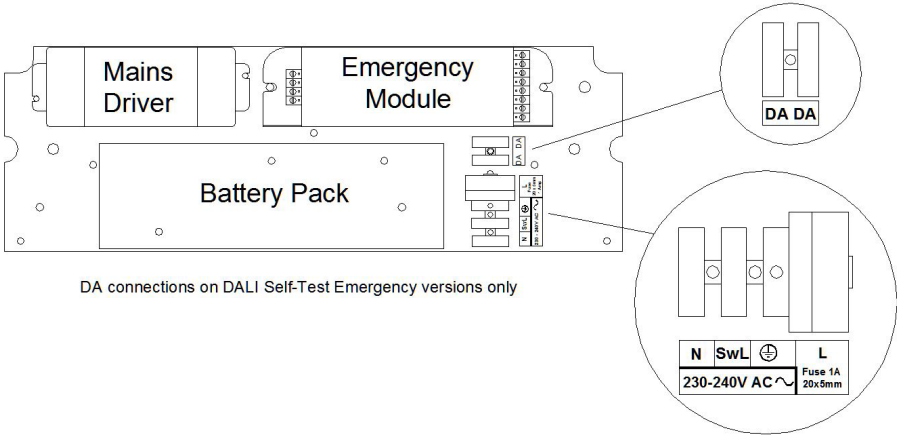
ISS 250325



Installation & Wiring Instructions
OLP/1/DA -
DALI Self-Test Bulkhead

PLEASE READ THESE INSTRUCTIONS BEFORE COMMENCING INSTALLATION & LEAVE WITH END USER

Typical Wiring
Diagram



LED Fault indication		
Green Solid	Battery Charging, no fault	On
Green Blink	Pre-Commissioning	2.0s on, 0.2s off
Green Flash	Function Test running	0.2x on, 2.0s off
Green Flash	Duration test running	0.2s on, 2.0s off
Red Blink	Battery Temperature fault	0.2s on, 3.8s off
Red Flash x1	Battery fault	0.5s on, 3.5s off
Red Flash x2	Lamp fault	2x 0.5s on, 2.5s off
No Indication	Fault	-
Red/Green Flash	Duration test timeout (after 7 days)	2.0s green, 0.2s red

Luminaire Ref/Location			In case of difficulty, contact the Installation Engineers:-							
			Tel: _____							
Full Recharge Time 24 Hours			Duration 3 Hours				Lamp Type - LED			
ROUTINE TEST RECORD										
	Year 1		Year 2		Year 3		Year 4		Year 5	
Monthly Test	Signed	Date	Signed	Date	Signed	Date	Signed	Date	Signed	Date
Functional										
Functional										
Functional										
Functional										
Functional										
Functional										
Functional										
Functional										
Functional										
Functional										
Functional										
Three Hour										