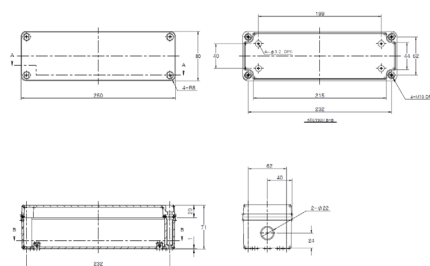


# Technical Specification

## D2N/2/WP100/R -

### Remote DALI-2 Self-Test Range



L = 250mm      W = 80mm      H = 70mm

- DALI-2 Self-Test Conversion Kit
- Deep Discharge Protection
- Average Emergency Power 5W
- Complete Kit Housed in One Enclosure
- Extra Long Life LiFePO<sub>4</sub> Batteries
- Converts LED Loads from 10-80 Volts
- Ingress Protection Rating of IP54
- Moulded in High Grade Polycarbonate
- Features Battery Temperature Protection

There are two versions available -

## Order Codes

**D2N/2/WP100/R** For LED loads, operating in voltage range of 10 - 55 Volt loads, up to 2A

**D2N/2/80/WP100/R** For LED loads, operating in voltage range of 10 - 80 Volt loads, up to 2A

Units supplied in single part remote enclosure with termination for simple connection.

## Technical Details:

Mains Supply	230-240V AC 50/60 Hz	Max Module Ta and Tc	Ta = 50 °C & Tc = 70 °C
Power Rating (Charging) *	4W 21mA $\lambda = 0.79$	Battery Temp. Parameters	0°C to 55 °C
Power Rating (Standby) *	1.4W 12mA $\lambda = 0.48$	Charge Indicator	Side of Enclosure
Duration	3-Hours	Battery Discharge Current	950mA Nominal
Recharge Period	24-Hours	Discharge Voltage Limit (DDP)	3 Volts
Battery Size & Type	6.4V 3.8Ah LiFePO <sub>4</sub> Cell	Ingress Protection	IP54
Charge Current	225mA Nominal	Mains Input Terminal - Screw	1.0mm <sup>2</sup> - 2.5 mm <sup>2</sup>
Enclosure Material	Polycarbonate	Dimensions (LxWxH)	250mm x 80mm x 70mm
Kit Weight	1.48Kg	Mains Input Gland Size	16mm

\* After its initial charge, the D2N/2 will spend 90% of its operational life in the standby mode

The D2N/2/WP100/R is supplied as a remote conversion kit for mounting away from the fitting in damp locations. This kit would be used in applications where space inside the fitting is limited.

A 3 hour DALI-2 self-test emergency lighting conversion kit which operates with extra long life LiFePO<sub>4</sub> batteries. The unit is designed to suit an extremely wide range of LED types and circuits. The D2N/2/WP100/R automatically adjusts the output LED current to provide the best match between the battery and the load, providing maximum illumination whilst ensuring full battery duration.

Please note that if mounting this kit more than 1m away from the luminaire, Fire Rated cable must be used to connect the pack to the fitting. (BS EN 5266-1)

The charger will cut-off if the Tc of the battery falls below 0 degrees C or above 55 degrees C. The product will however operate when required in emergency, should there be enough capacity remaining in the battery.