

**PLEASE READ** THESE INSTRUCTIONS BEFORE COMMENCING INSTALLATION & LEAVE WITH END USER

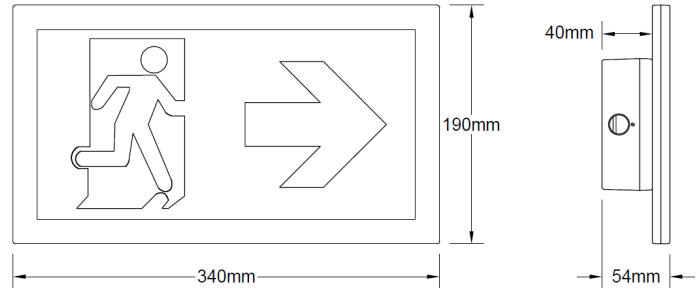
## Description:

The CE2S is a compact, architectural exit sign. The CE2S is designed to be wall mounted as shown overleaf.

The battery is a 3.2V 3.8Ah lithium iron phosphate (LiFePO<sub>4</sub>). The LEDs are driven at 700mA and provide suitable legend illumination for 3 hours.

The control gear that powers the CE2S/DA operates with the DALI-2 protocol.

The CE2S is supplied with a kit of ISO7010 legend vinyls, so you can choose from arrow up, arrow down, arrow left, or arrow right at the point of installation.



The unit will recharge the batteries after the test of clause 22.3 of BS EN 61347-2-7:2012.

The product features battery temperature protection in accordance with IEC 61347-2-7: 2012+A12:2022.

## Specification:

Input Voltage	230-240 Volts AC 50/60 Hz
Power Standard Charging *	5.7W 34mA $\lambda = 0.71$
Power Standard Charged *	0.2W 11mA $\lambda = 0.07$
Power DALI Charging *	5.4W 30mA $\lambda = 0.75$
Power DALI Charged *	0.3W 8mA $\lambda = 0.15$
Duration	3-hours
Minimum Battery Tc	0°C
Maximum Battery Tc	55°C
Ta	5°C to 25°C
Battery Fuse	Internal
Discharge Current	900mA nominal
Discharge Voltage Cut-off	2.5V
Ingress Protection	IP40
Battery Pack	3.2V 3.8Ah LiFePO <sub>4</sub>
Charge Current	225mA nominal
Recharge Period	24-Hours
Overall Weight	1.1Kg

\* LiFePO<sub>4</sub> control gear will initially charge the battery and then spend 90% of its operational life in a 'Charged' or standby state.

## Part Codes

CE2S/M/**	Maintained/Non-maintained basic emergency
CE2S/DA/**	Maintained/Non-maintained DALI-2 Self-test
CE2S/LMEM/**	Maintained/Non-maintained Wireless Self-test

\*\* Denotes arrow direction required. AU for arrow up, AD for arrow down and ALAR for arrow left/arrow right

## Important

It is recommended that the unit is installed by a competent person ensuring the installation complies with the necessary standards. Liteplan accept no responsibility for injury, damage or loss, which may arise as a result of incorrect installation, operation or maintenance.

The product requires an un-switched supply for charging the battery..

ISOLATE MAINS SUPPLY AND DISCONNECT THE BATTERY BEFORE INSTALLATION OR MAINTENANCE.

### Installation:

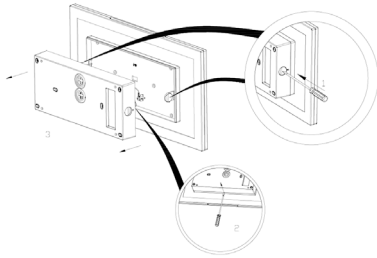
1. Cut power to the location, via the breaker.
2. Remove the back box from the main body of the exit sign.
3. Install the first fix section to the wall, as required and bring the mains cable through. See overleaf.
4. Install the mains cables either as maintained, or non-maintained and, where required, the DALI bus cables as shown overleaf.
5. Connect the Output to LED lead to the main body of the exit sign.
6. Once permanent power is assured, connect the 3-way battery connectors .
7. Click the body to the first fix part, adding security screws, where required.
8. Fit the legend vinyl to the body, ensuring the correct arrow direction is chosen. This should follow the guidance of BS (EN) 5266.
9. Reinstate power to the location at the breaker.
10. See Testing and Commissioning section.

# Installation & Wiring Instructions

## CE2S/M and CE2S/DA

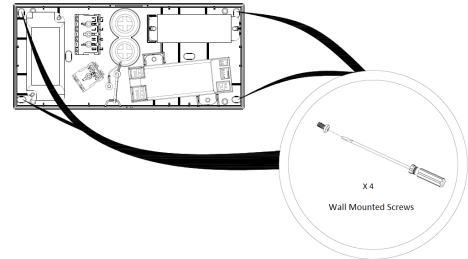
**PLEASE READ** THESE INSTRUCTIONS BEFORE COMMENCING INSTALLATION & LEAVE WITH END USER

Figure one



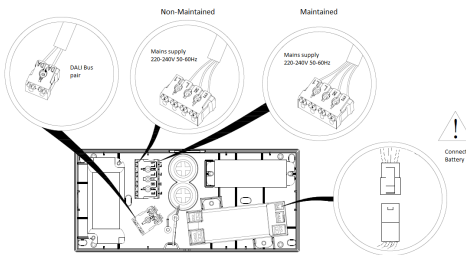
1 - Take the fitting apart as shown in the above diagrams, removing the back box from the main body of the exit sign.

Figure two



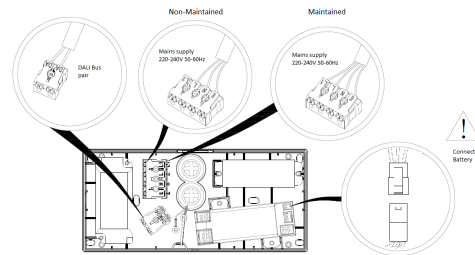
2 - Install the first fix section of the CE2S to wall, using either fixing points A or B.

Figure three



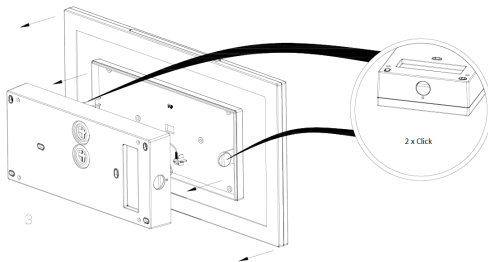
3 - Fit mains supply cables to the terminals as shown. Either maintained or non-maintained as indicated and fit DALI cables if required. (DALI versions only).

Figure four



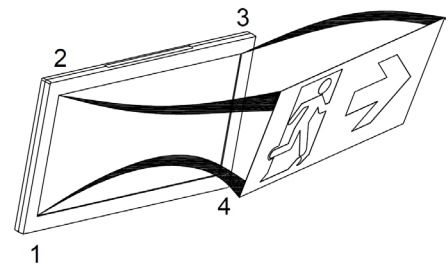
4 - Once mains supply is present, connect the battery cable connectors together, plug the charge LED into the module and connect the LED leads from the panel to the module.

Figure five



5 - Click the main body of the CE2S to the back box listening out for two clicks. Where required, add two security screws at the dimples.

Figure six



6 - Fit the legend vinyls to the body of the CE2S, starting at corner 1, then corner 2, then 3, then 4, observing the requirements of BS (EN) 5266.

### Testing/Commissioning:

- Ensure the load is connected.
- Switch on the Un-switched supply - Check the charge LED illuminates.
- Switch off the Un-switched supply - Check the charge LED extinguishes and the central load LED illuminates.
- Switch on the Un-switched supply.