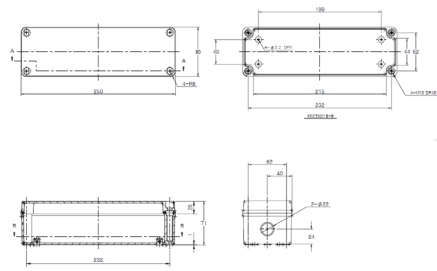
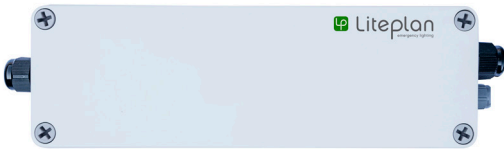


Technical Specification
D2N/1/WP100/R -
 Remote DALI-2 Self-Test Range



L = 250mm W = 80mm H = 71mm

The D2N/1/WP100/R is supplied as a remote conversion kit for mounting away from the fitting in damp or wet locations. This kit would be used in applications where space inside the fitting is limited.

- DALI-2 Self-Test Conversion Kit
- Average Emergency Power - 2.2W
- Complete Kit Housed in One Enclosure
- Extra Long Life LiFePO4 Batteries
- Converts LED Loads from 6-80 Volts
- Ingress Protection Rating of IP54
- Moulded in High Grade Polycarbonate
- Suitable for a 100mm Aperture

A 3 hour DALI-2 self-test emergency lighting conversion kit which operates with extra long life LiFePO4 batteries. The unit is designed to suit an extremely wide range of LED types and circuits. The D2N/1/WP100/R automatically adjusts the output LED current to provide the best match between the battery and the load, providing maximum illumination whilst ensuring full battery duration.

Please note that if mounting this kit more than 1m away from the luminaire, Fire Rated cable must be used to connect the pack to the fitting. (BSEN5266-1)

There are 2 versions available -

Order Codes

D2N/1/WP100/R For LED loads, operating in voltage range of 6 - 55 Volts
 Unit supplied in single part remote enclosure with termination for simple connection.

D2N/1/80/WP100/R For LED loads, operating in voltage range of 6 - 80 Volts
 Unit supplied in single part remote enclosure with termination for simple connection.

Technical Details:

Mains Supply	230-240V AC 50/60 Hz	Max Ta	50 °C
Power (charging) *	2.8W 17mA $\lambda = 0.70$	Max Tc	70 °C
Power (charged) *	1.4W 12mA $\lambda = 0.48$	Max Battery Temperature	55 °C
Duration	3 Hours	Battery Discharge Current	900mA Nominal
Recharge Period	24-Hours	Discharge Voltage Limit (DDP)	3 Volts
Battery Size & Type	3.2V 3.8Ah LiFePO4 Cells	Ingress Protection	IP54
Charge Current	225mA Nominal	Mains Input Terminal - Screw	1.0mm ² - 2.5 mm ²
Enclosure Material	Polycarbonate	Dimensions (LxWxH)	250mm x 80mm x 71mm
Kit Weight	1.28Kg	Mains Input Gland Size	16mm

* Following its initial charge, the D2N/1/WP100/R will spend 90% of its operational life in standby mode.