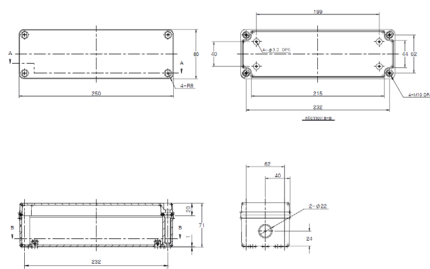


# Technical Specification

TNA/2/WP100/R High Output High Voltage Remote DALI Self-Test Range



- DALI Self-Test Conversion Kit
- Deep discharge protection
- Complete Kit Housed in One Enclosure
- Extra Long Life LiFePO4 Batteries
- Converts LED Loads from 50-300 Volts
- Ingress Protection Rating of IP54
- Moulded in High Grade Polycarbonate
- Average Emergency Power of 4.4W
- Operates with LiteMesh Wireless System
- Module 3rd Party Tested and Certified by TÜV

The TNA/2/WP100/R is supplied as a remote conversion kit for mounting away from the fitting in damp locations. This kit would be used in applications where space inside the fitting is limited.

A 3 hour DALI self-test emergency lighting conversion kit which operates with extra long life LiFePO4 batteries. The unit is designed to suit an extremely wide range of LED types and circuits. The TNA/2/WP100/R automatically adjusts the output LED current to provide the best match between the battery and the load, providing maximum illumination whilst ensuring full battery duration.

Please note that if mounting this kit more than 1m away from the luminaire, Fire Rated cable must be used to connect the pack to the fitting. (BSEN5266-1)

There is one version available -

## Order Codes

**TNA/2/WP100/R** For LED loads, operating in voltage range of 50 - 300 Volts

Unit supplied in single part remote enclosure with labelled termination for simple connection.

## Technical Details:

Mains Supply	230-240V AC 50/60 Hz	Max Ta and Tc	Ta = 50 °C & Tc = 70 °C
Power Rating (Charging)	3.8W 21mA λ = 0.77	Max Battery Temperature	55 °C
Power Rating (Standby)	1.3W 13mA λ = 0.45	Charge Indicator	Side of Enclosure
Duration	3-Hours	Battery Discharge Current	900mA Nominal
Recharge Period	24-Hours	Discharge Voltage Limit (DDP)	5.0 Volts
Battery Size & Type	6.4V 3.8Ah LiFePO4 Cell	Ingress Protection	IP54
Charge Current	225mA Nominal	Mains Input Terminal - Screw	1.0mm <sup>2</sup> - 2.5 mm <sup>2</sup>
Enclosure Material	Polycarbonate	Dimensions (LxWxH)	222mm x 146mm x 55mm
Kit Weight	1.48Kg	Mains Input Gland Size	16mm

\* After its initial charge, the TNA/2/WP100/R will spend 90% of its operational life in the standby mode

Tel +44 (0)1708 372223 | www.liteplan.com | customerservice@liteplan.com | RM3 0AP. UK

Liteplan reserve the right to change colour, price or specification without prior notice